

SITUATION UPDATE

In 2024, a total of 1.7 million people are targeted in Mozambique, including 1.24 million people in conflict-affected areas and another 429,623 people across the country to mitigate the risks and impacts of natural disasters.

By the end of May 2024, some 937,965 thousand people had been reached, of which, 487,742 are women and 534,640 are children. People reached include IDPs (94 per cent of target), host communities (over 100 per cent of target) and returnees (21 per cent of target).

A total of 76 humanitarian organisations are coordinating assistance to people in need through the HRP, a quarter of them are national NGOs

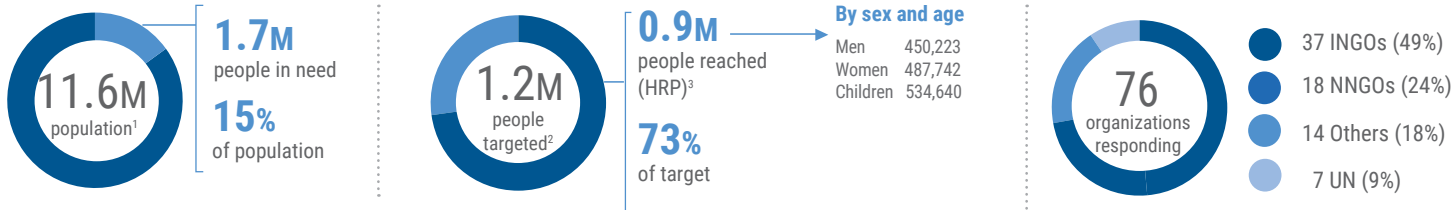
Camp Coordination and Camp Management Cluster (76 per cent), Nutrition Cluster (73 per cent), Education Cluster (65 per cent of target reached) and Food Security Cluster (Food assistance 67 per

cent) reported the highest level of achievement, while Shelter/NFIs (26 per cent) and WASH (21 per cent) reached the lowest numbers.

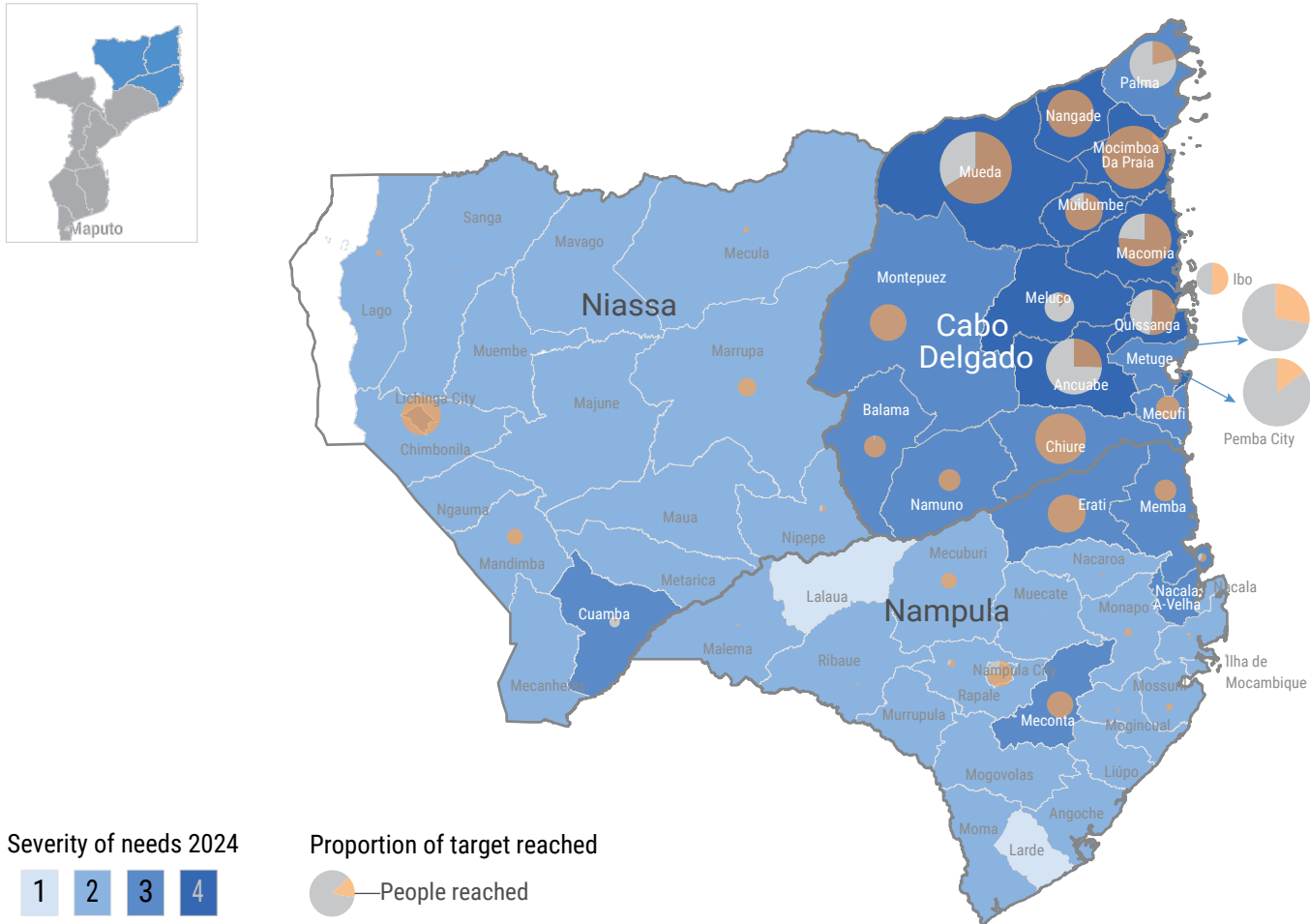
The Food Security and Livelihoods partners reported achievements of 94 per cent. However, there is a considerable gap between food aid and livelihood interventions, with the latter reaching 32 per cent of the target.

At the end of May 2024, the HRP was 18 per cent funded, having received approximately U\$73.7 million out of \$413 million requested. An additional \$7.1 million has been received outside the HRP framework. Funding imbalances among clusters persisted in 2024; all cluster received below 25 per cent of funding except for the Refugees and Coordination and common service sector.

KEY FIGURES



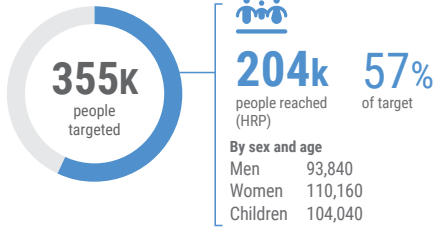
PEOPLE REACHED BY DISTRICT BETWEEN AS OF MAY 2024



CLUSTER RESPONSE OVERVIEW

CCCM

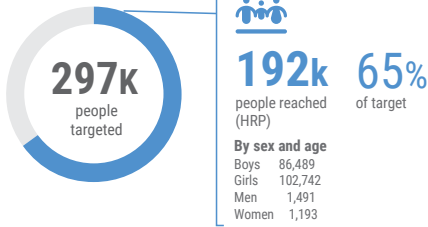
600k people in need



54 of displacement sites/areas where, specific services exist for vulnerable groups (persons with disabilities)

EDUCATION

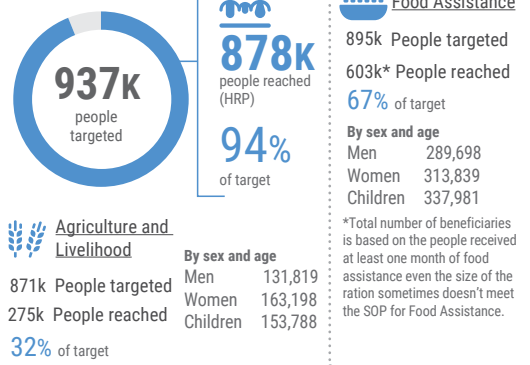
420k people in need



55,274 Accelerated learning programs
71,788 School feeding

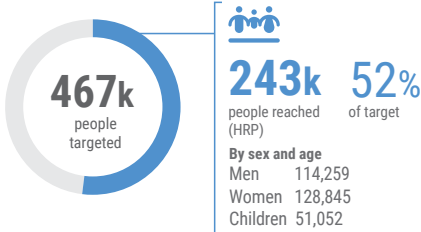
FOOD SECURITY & LIVELIHOODS

970k people in need



HEALTH

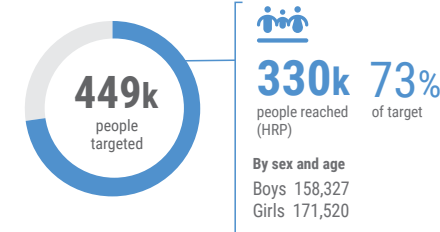
950k people in need



90,747 Outpatient consultations
42,036 Women of Child Bearing Age (WCBA) receiving modern contraceptives

NUTRITION

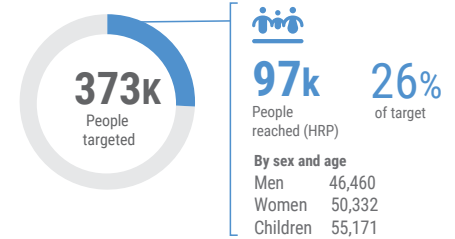
562k people in need



60,455 Number of under five children screened for acute malnutrition
56,157 Number of children 6 to 59 months receiving vitamin A supplementation
1,435 Number of Pregnant and Lactating Women screened for acute malnutrition

SHELTER /NFIs

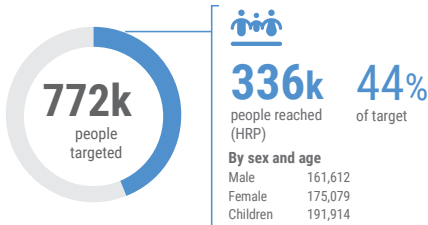
1.2M people in need



10,793 People assisted with emergency shelter kits

PROTECTION

1.4M people in need



40,723 Prevention of sexual exploitation and abuse in emergencies
3,462 Awareness raising or trainings on mine risk education
3,665 Psychosocial services / MHPSS
8,750 IDPs with access to civil documentation

PROTECTION

678k People targeted
72k People reached with protection services

CHILD PROTECTION

317k People targeted
253k Children reached

GENDER-BASED VIOLENCE

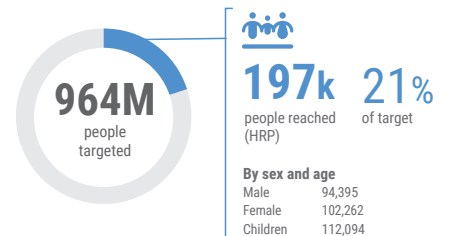
375k People targeted
76k People reached

PSEA

29k People reached by PSEA services

WASH

1.4M people in need



67,620 people accessing safe and appropriate sanitation facilities
70,140 people reached with critical WASH supplies

For more details please see the [online humanitarian dashboard](#)

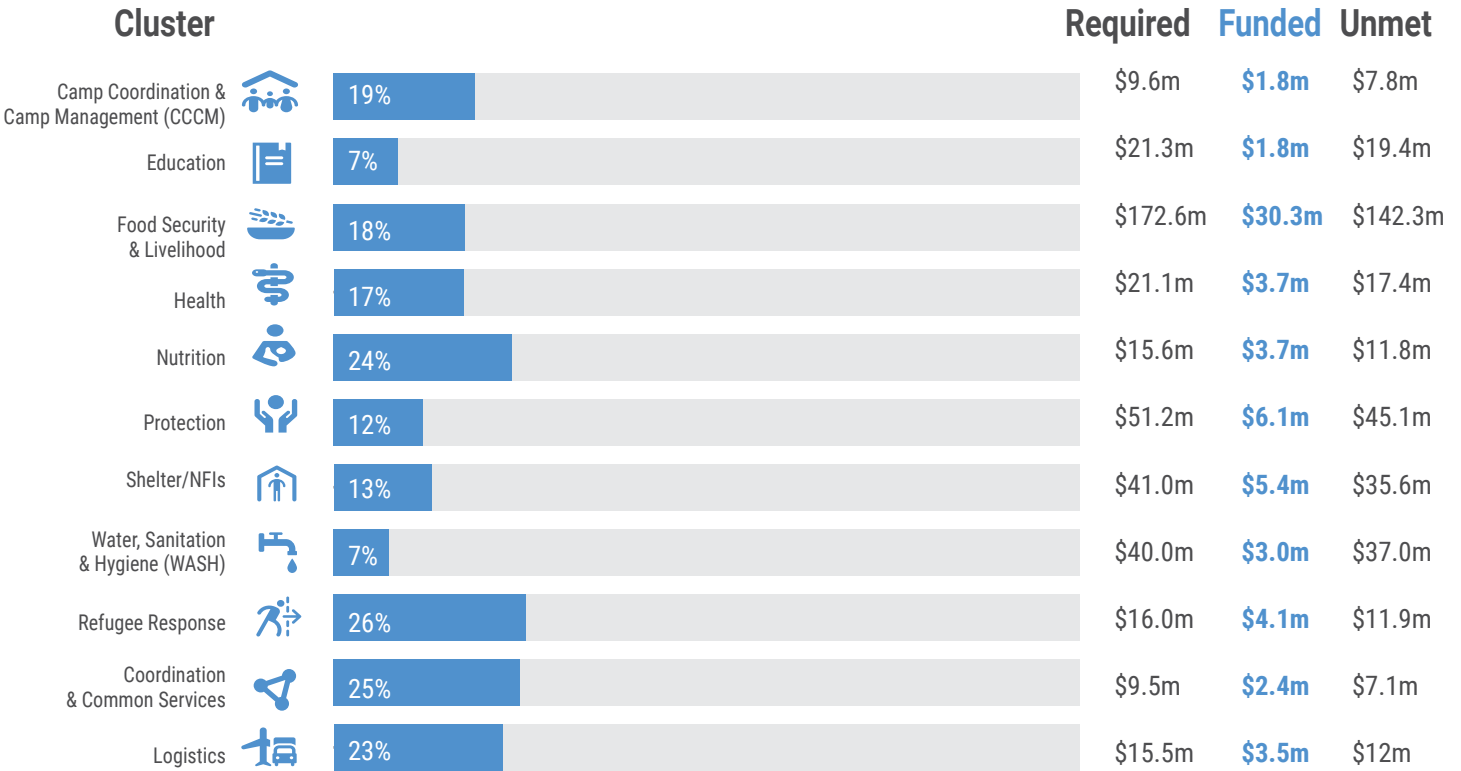
MOZAMBIQUE

2023 Humanitarian Response Dashboard

May 2024

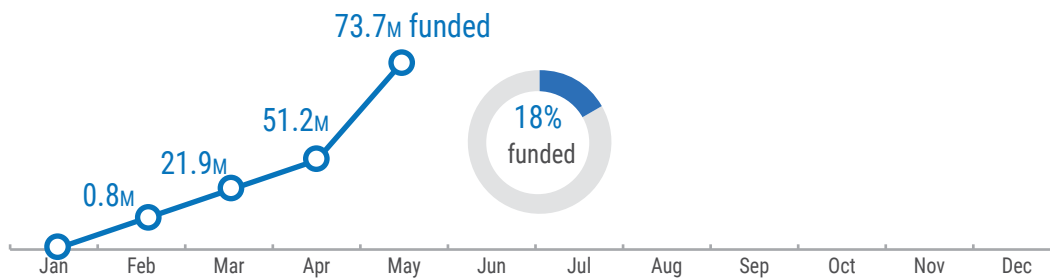
2023 HRP FUNDING (as of 31 May)

\$413M	\$73.7M	17.8%	\$339.7M	\$7.1M
HNRP Requirements	HNRP Funds Received	Percentage Funded	Unmet Funding	Funding Received Outside HNRP



* Funding not specified: \$7.8m

FUNDING TREND



TOP 11 DONORS



5. As recorded on OCHA Financial Tracking Service (<https://fts.unocha.org/appeals/1131/summary>).