

3.3M

people most likely to be affected by floods (Flood Response Plan 2024)¹

710K

people affected by floods²

91%

of people affected are in Jonglei, Northern Bahr el Ghazal, Warrap and Unity States²

24

Health Facilities affected by floods

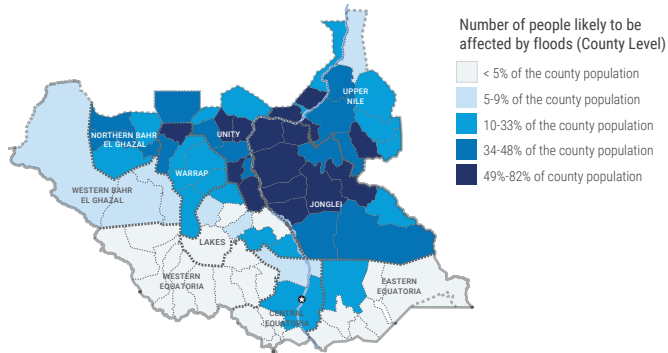
30

counties and Abyei affected by floods

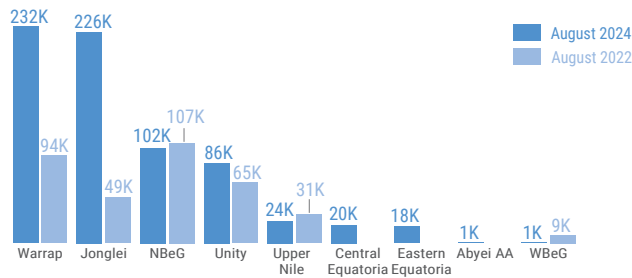
SITUATION UPDATE

Continuous heavy rains since May, combined with controlled water releases from Lake Victoria, have significantly raised Nile River levels, affecting about 710,000 people across 30 of South Sudan's 78 counties and Abyei Administrative Area. The floods have devastated homes, destroyed crops, disrupted education and health services, and restricted access to essential facilities. Reports indicate rising malaria cases, respiratory tract infections, acute watery diarrhea, and snakebites. Flood-affected people were unable to tend to their lands and livestock, further aggravating their vulnerabilities.

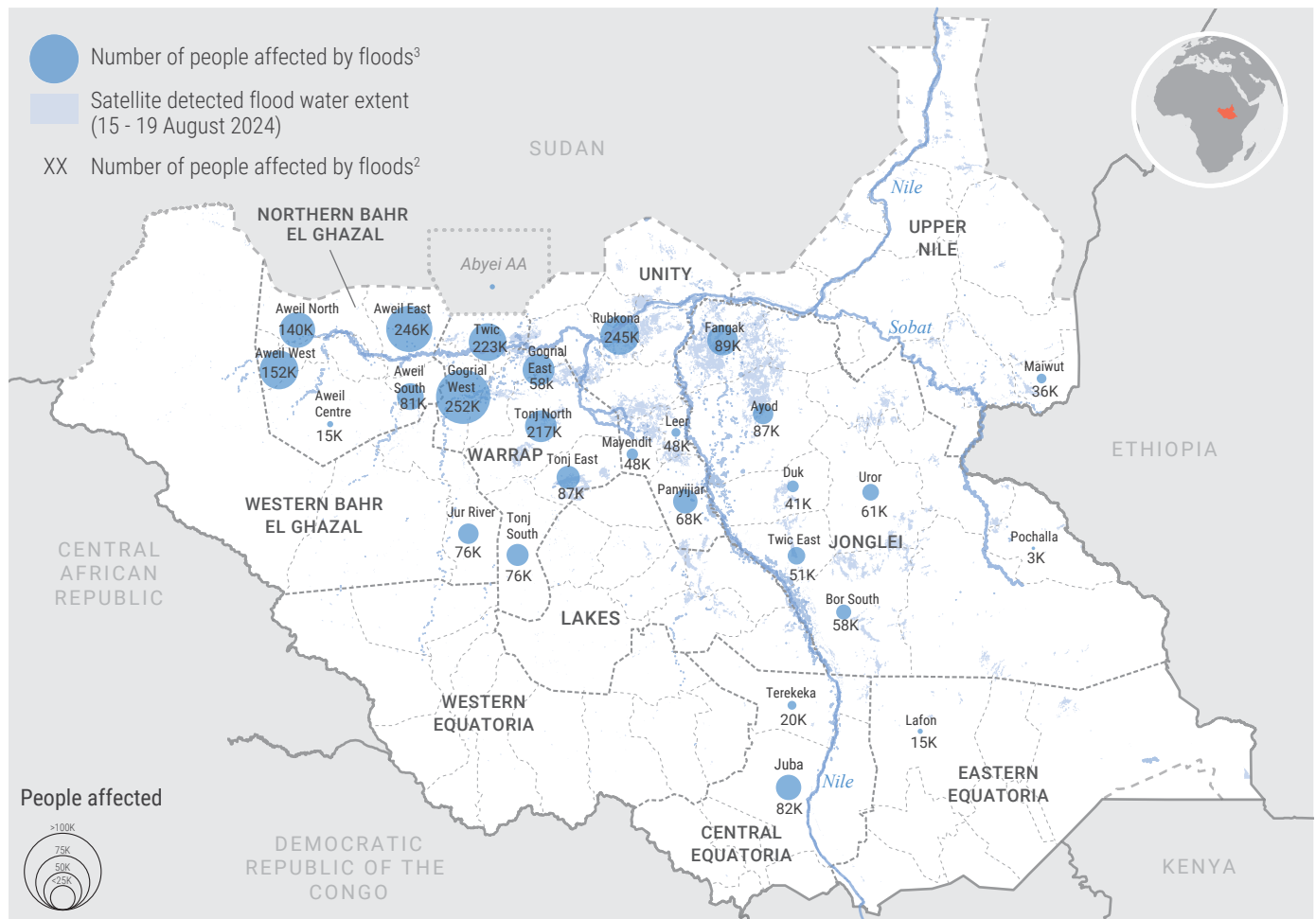
PEOPLE LIKELY TO BE AFFECTED BY FLOOD¹



FLOOD-AFFECTED PEOPLE BY STATE



PEOPLE AFFECTED BY FLOODS



The boundaries and names shown and the designations used on this map do not imply official endorsement or acceptance by the United Nations. Final boundary between the Republic of South Sudan and the Republic of Sudan has not yet been determined. Final status of Abyei area is not yet determined.

Creation date: 5 September 2024 | Sources: RRC, OCHA, UNOSAT, humanitarian partners in South Sudan | 1. South Sudan flood preparedness and response plan (2024) <https://bit.ly/SouthSudanFloodPreparednessandResponsePlan>

2. The number of people affected by floods is pending verification | 3. The map only displays areas where affected figures are available | Feedback: ochasouthsudan@un.org | [@OCHASouthSudan](https://twitter.com/OCHASouthSudan) | [ActforHumanity](https://www.facebook.com/ActforHumanity)