

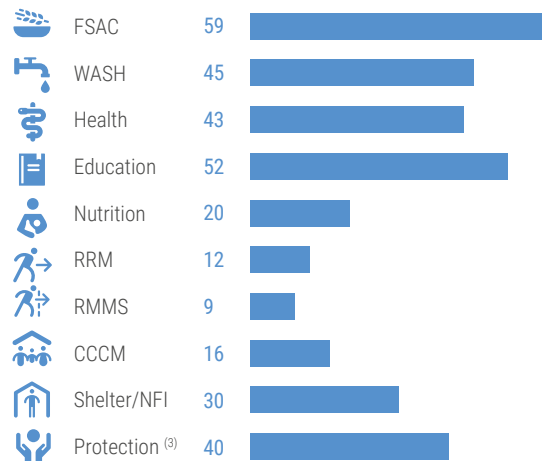
Overview

Yemen remains one of the world's largest humanitarian crises, with an estimated **18.2 million** people in need of humanitarian assistance and protection services in 2024. Despite the de facto continuation of the truce on the ground, the country still faces the brunt of conflict and displacement, protection concerns, climate change, and economic deterioration.

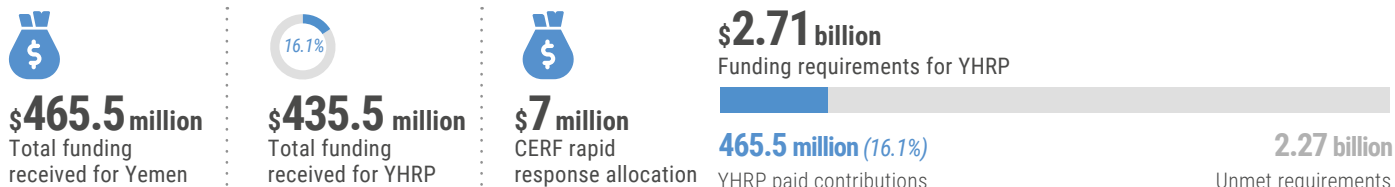
By the end of March, the 2024 Yemen Humanitarian Response Plan, seeking **\$2.71 billion** to implement the most prioritized activities needed for the most vulnerable people, was only **16.1 per cent** funded. Even though **\$2.27 billion** remains in unmet funding requirements, the aid agencies are working tirelessly to provide people in need with crucial assistance and services.

In the first quarter of 2024, a total of **140** humanitarian organizations continued to deliver aid to an average of **3.13 million** people per month. While the number of people reached with assistance per cluster remained low, partners continued to provide support to millions of people – an average of **2.9 million** people were reached each month with food assistance, over **506,000** people were assisted with healthcare, over **709,000** people were provided with water, sanitation, and hygiene (WASH) services, and nearly **331,000** people received nutrition support.

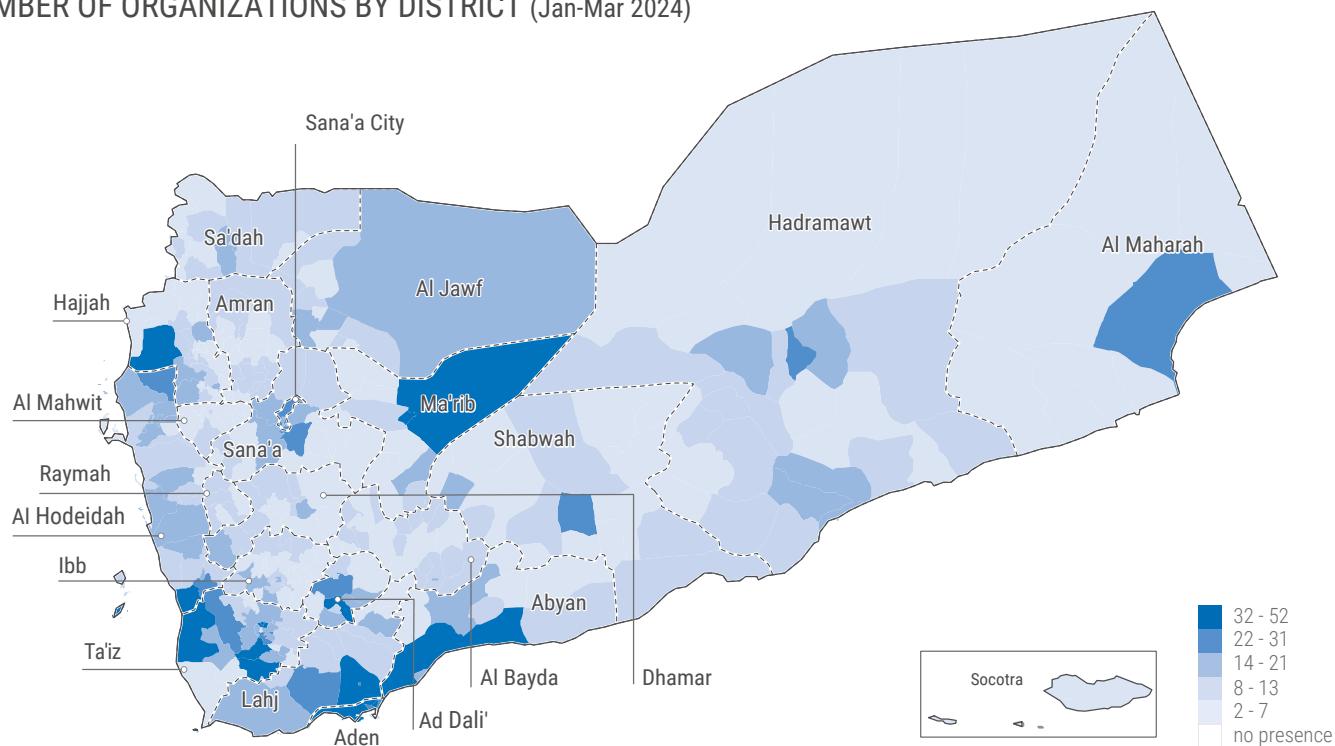
NUMBER OF ORGANIZATIONS BY CLUSTER (Jan-Mar 2024) ⁽¹⁾⁽²⁾



YHRP FUNDING STATUS (5 May 2024)



NUMBER OF ORGANIZATIONS BY DISTRICT (Jan-Mar 2024)

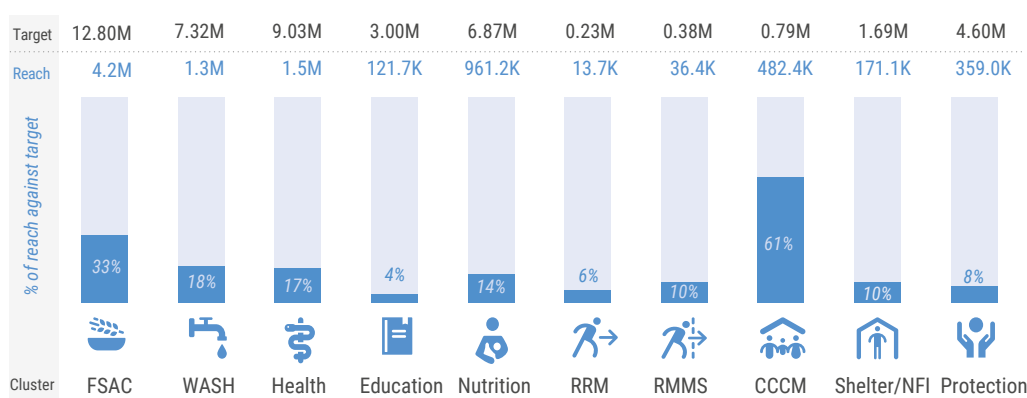


The boundaries and names shown and the designations used on maps do not imply official endorsement or acceptance by the United Nations. (1) Implementing partners or programme organizations that conducted HRP activities from January to March and reported to clusters. (2) Organizations may be active in multiple clusters. (3) Child Protection, and Gender-Based Violence, activities are represented within the Protection Cluster.

MONTHLY REACH BY CLUSTER (Jan-Mar 2024)

	FSAC	WASH	Health	Education	Nutrition	RRM	RMMS	CCCM	Shelter	Protection ⁽¹⁾	Inter-cluster
JAN	792.0K	782.8K	708.7K	27.0K	340.4K	4.4K	14.3K	419.3K	77.8K	51.5K	1.93M
FEB	2.2M	770.4K	517.2K	74.3K	357.3K	5.7K	11.6K	465.8K	37.4K	107.1K	3.09M
MAR	3.8M	576.6K	293.6K	20.4K	295.4K	3.5K	10.5K	389.4K	55.9K	200.4K	4.39M
APR	-	-	-	-	-	-	-	-	-	-	-
MAY	-	-	-	-	-	-	-	-	-	-	-
JUN	-	-	-	-	-	-	-	-	-	-	-
JUL	-	-	-	-	-	-	-	-	-	-	-
AUG	-	-	-	-	-	-	-	-	-	-	-
SEP	-	-	-	-	-	-	-	-	-	-	-
OCT	-	-	-	-	-	-	-	-	-	-	-
NOV	-	-	-	-	-	-	-	-	-	-	-
DEC	-	-	-	-	-	-	-	-	-	-	-
Cumulative (Jan- Mar 2024)	4.21M	1.32M	1.52M	121.7k	961.2k	13.7k	36.4k	482.4k	171.1k	359.0k	②3.13M

PEOPLE REACHED BY CLUSTER (Jan-Mar 2024)



FOOD SECURITY AND AGRICULTURE (FSAC)

59 ORGANIZATIONS

33% PEOPLE REACHED

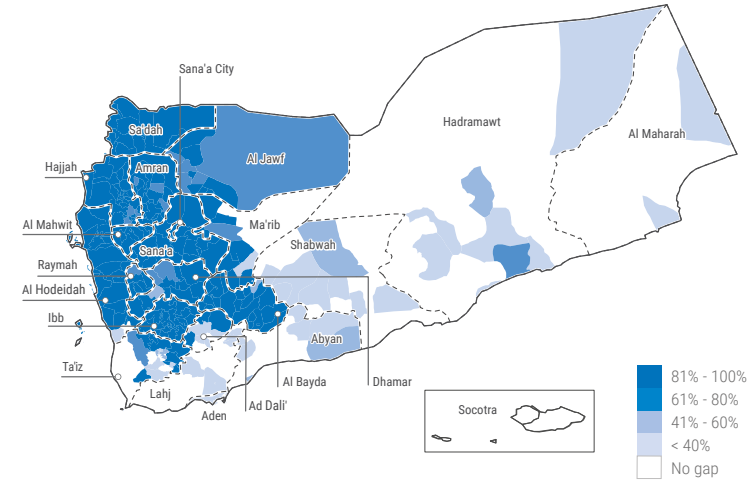
12.80M PEOPLE TARGETED 4.21M PEOPLE REACHED

Men 3.07M 1.15M

Women 2.94M 1.12M

Boys 3.46M 0.99M

Girls 3.33M 0.95M



WATER, SANITATION AND HYGIENE (WASH)

45 ORGANIZATIONS

18% PEOPLE REACHED

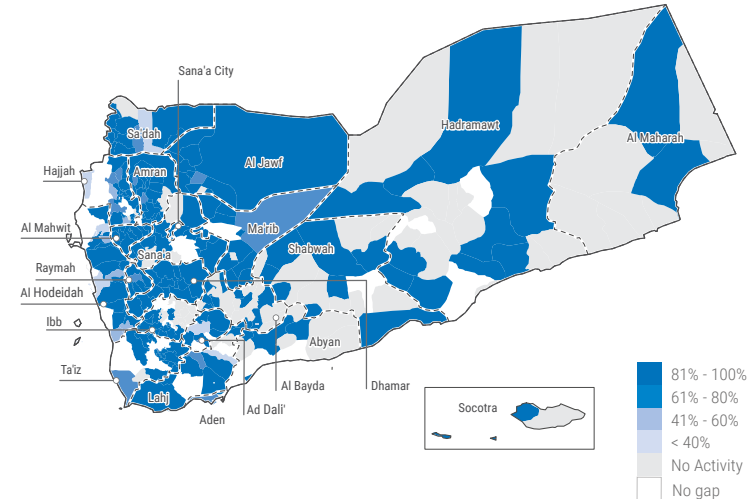
7.322M PEOPLE TARGETED 1.32M PEOPLE REACHED

Men 1.89M 338.23K

Women 1.78M 337.16K

Boys 1.83M 323.70K

Girls 1.81M 318.75K



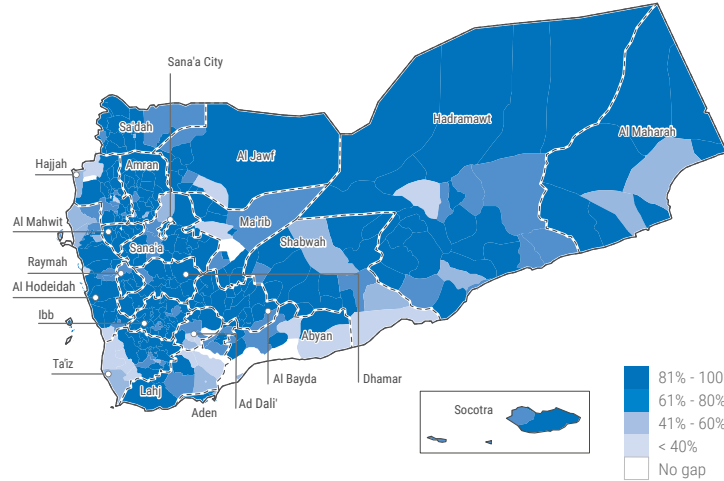
The boundaries and names shown and the designations used on maps do not imply official endorsement or acceptance by the United Nations. Discrepancies between topline figures and breakdowns are due to rounding adjustments. (1) Child Protection and Gender-Based Violence, activities are represented within the Protection Cluster. (2) The inter-cluster reach between January and March 2024 is an average of monthly reach across clusters.



HEALTH

43 ORGANIZATIONS
17% PEOPLE REACHED

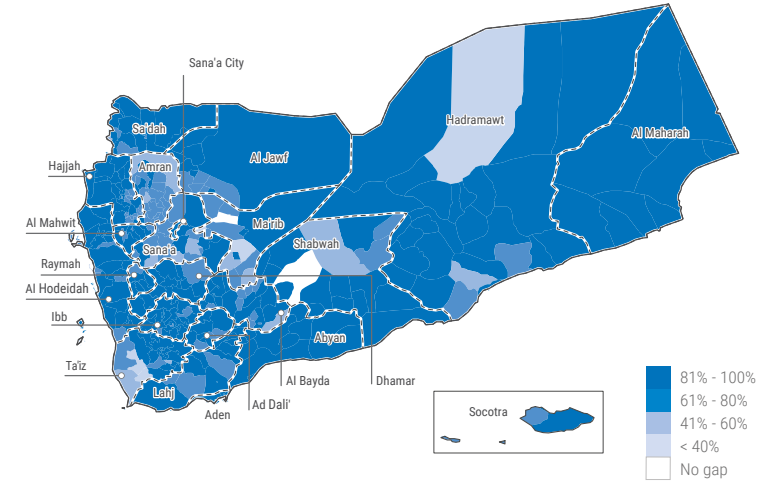
	9.03M	1.52M
	PEOPLE TARGETED	PEOPLE REACHED
Men	2.56M	193.47K
Women	2.01M	432.44K
Boys	2.44M	465.76K
Girls	2.03M	427.85K



NUTRITION

20 ORGANIZATIONS
14% PEOPLE REACHED

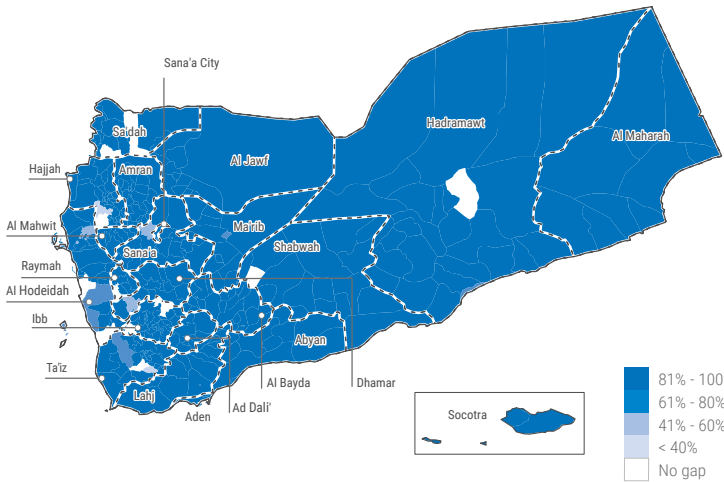
	6.87M	0.96M
	PEOPLE TARGETED	PEOPLE REACHED
Men	0.00M	0.00K
Women	2.11M	667.10K
Boys	2.33M	146.08K
Girls	2.43M	148.07K



EDUCATION

52 ORGANIZATIONS
4% PEOPLE REACHED

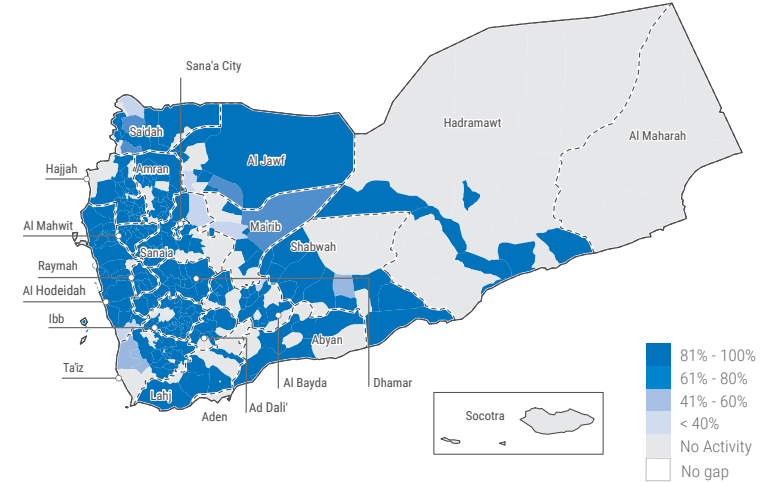
	3.00M	121.70K
	PEOPLE TARGETED	PEOPLE REACHED
Men	0.02M	1.75K
Women	0.02M	2.41K
Boys	1.57M	54.67K
Girls	1.39M	62.88K



Rapid Response Mechanism (RRM)

12 ORGANIZATIONS
6% PEOPLE REACHED

	0.23M	13.68K
	PEOPLE TARGETED	PEOPLE REACHED
Men	0.06M	3.50K
Women	0.06M	3.37K
Boys	0.06M	3.47K
Girls	0.06M	3.34K



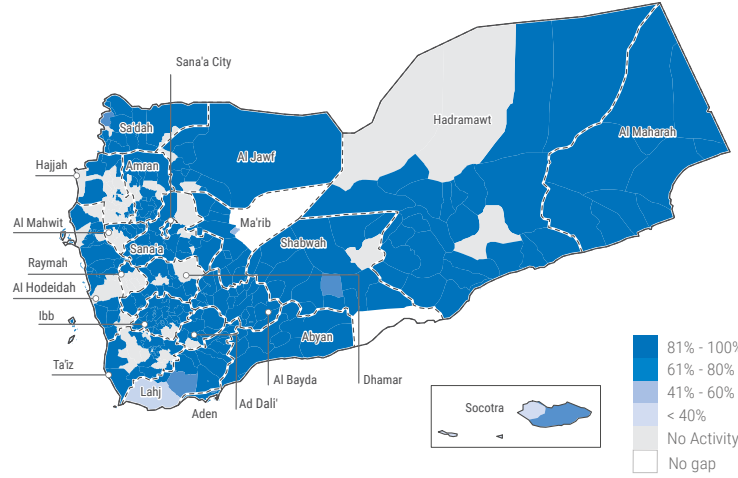


REFUGEES AND MIGRANTS MULTI-SECTOR (RMMS)

9 ORGANIZATIONS
10% PEOPLE REACHED

0.38M PEOPLE TARGETED **36.45K** PEOPLE REACHED

Men	0.06M	24.25K
Women	0.24M	5.11K
Boys	0.03M	5.25K
Girls	0.05M	1.84K

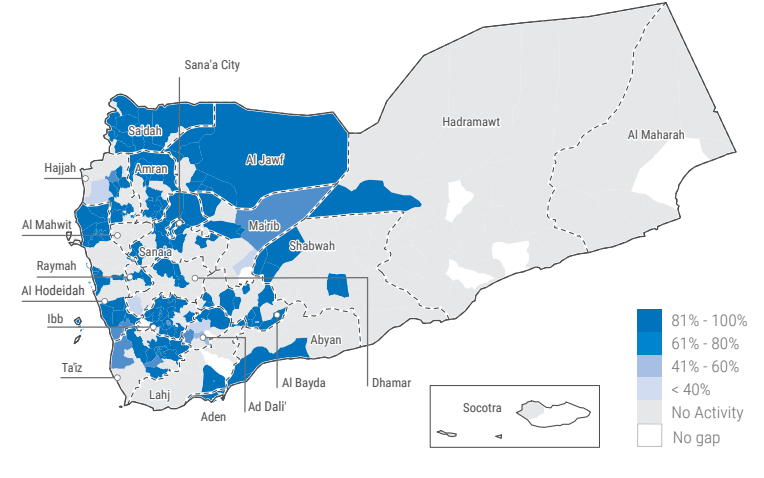


Shelter/Non-Food items (NFI)

30 ORGANIZATIONS
10% PEOPLE REACHED

1.69M PEOPLE TARGETED **171.08K** PEOPLE REACHED

Men	0.42M	41.61K
Women	0.40M	40.78K
Boys	0.44M	45.15K
Girls	0.43M	43.55K

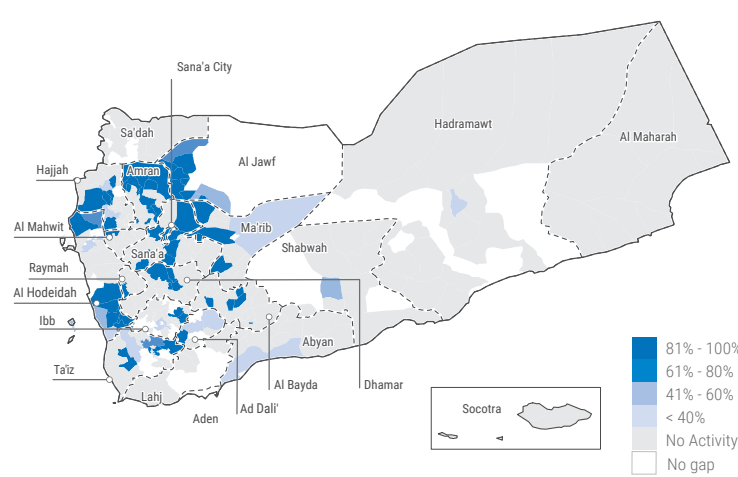


Camp Coordination and Camp Management (CCCM)

16 ORGANIZATIONS
61% PEOPLE REACHED

0.79M PEOPLE TARGETED **482.40K** PEOPLE REACHED

Men	0.21M	133.00K
Women	0.19M	122.37K
Boys	0.20M	117.10K
Girls	0.19M	109.94K

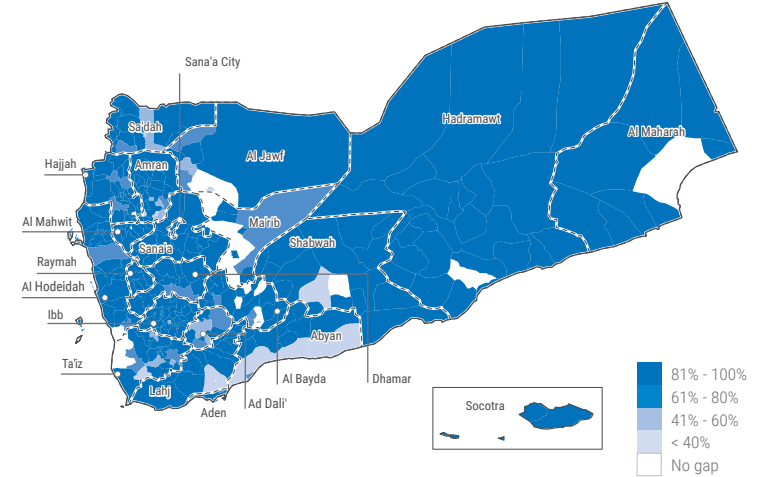


PROTECTION

40 ORGANIZATIONS
8% PEOPLE REACHED

4.60M PEOPLE TARGETED **358.99K** PEOPLE REACHED

Men	0.74M	46.59K
Women	1.33M	118.28K
Boys	1.08M	90.97K
Girls	1.45M	103.15K



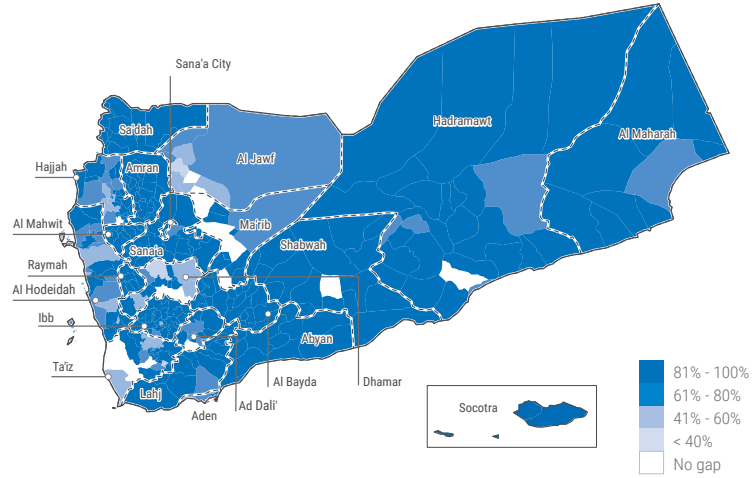


CHILD PROTECTION (PROTECTION CLUSTER AOR)

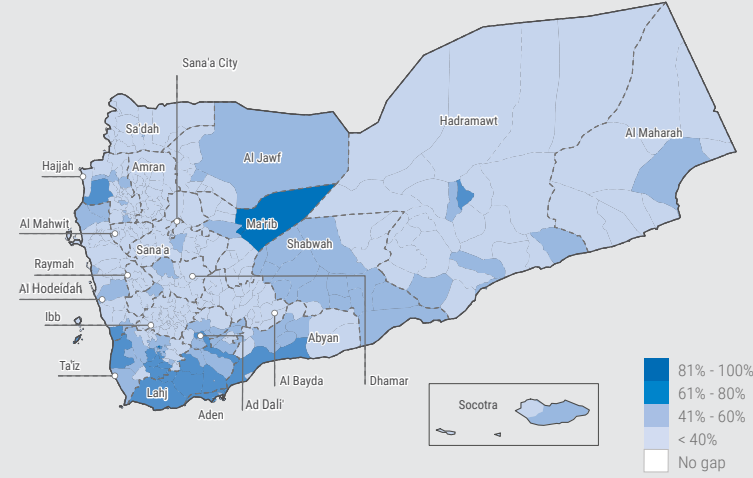
17
ORGANIZATIONS

11%
PEOPLE REACHED

0.88M	92.50K
PEOPLE TARGETED	PEOPLE REACHED
Men 0.02M	5.61K
Women 0.02M	9.90K
Boys 0.43M	39.54K
Girls 0.41M	37.45K



INTER-CLUSTER PEOPLE REACHED



GENDER-BASED VIOLANCE (GBV) (PROTECTION CLUSTER AOR)

16
ORGANIZATIONS

9%
PEOPLE REACHED

1.07M	97.03K
PEOPLE TARGETED	PEOPLE REACHED
Men 0.02M	5.38K
Women 0.68M	62.99K
Boys 0.02M	6.38K
Girls 0.35M	22.29K

